



# Roxtec Dichtung RS Ex mit SL RS

Für explosionsgefährdete Bereiche zugelassene Abdichtung zum Verschweißen für ein Einzelkabel oder -rohr.

Roxtec RS Ex mit SL RS ist eine Abdichtung mit Zulassung für Ex e- und Ex tb-Bereiche. Sie hat ein Metallmantelrohr und ist auf Einzelkabel und -rohre ausgelegt. Die Einführungsdichtung besteht aus zwei Hälften mit entfernbaren Schichten für die Anpassung an verschiedene Kabel- und Rohrgrößen. Das Mantelrohr wird mit dem Baukörper verschweißt.



- Beständig gegen Nagetierverbiss
- Schnelle und einfache Installation

## Produkteigenschaften



Feuerhemmend



Wasserdicht



Gasdicht



Ex- zertifiziert

## Aufbau der Installation



Metall

## Montagetyp



Schweißen

## Klassifizierungen und Zertifikate

### Feuer

- KLASSE A gemäß IMO 2010 FTP Code
- KLASSE H gemäß IMO 2010 FTP Code + HC-Brandlastkurve
- Feuerstrahlen gemäß ISO 22899-1 und OTI 95634

### Dichtigkeit

- Gas: 2,67 Bar (Katastrophenfall)
- Wasser: 4 bar (Katastrophenfall)

### Belege

- Ex- zertifiziert

## Daten der Abdichtungskomponenten

### Dichtkomponenten



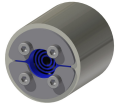
Roxtec-Kit RS W Ex

Weitere Informationen finden Sie unter [www.roxtec.com](https://www.roxtec.com).

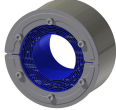


# Vorkonfigurierte Durchführungs-Kits

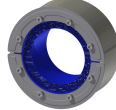
mm/kg



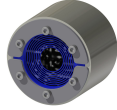
RS 25 W Ex  
AISI316/PRIMED



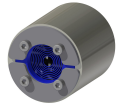
RS 125 W Ex AISI316  
WOC/PRIMED



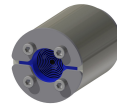
RS 150 W Ex AISI316  
WOC/AISI316



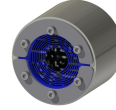
RS 75 W Ex  
AISI316/AISI316



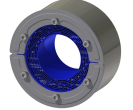
RS 50 W Ex  
AISI316/AISI316



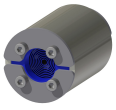
RS 43 W Ex  
AISI316/AISI316



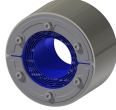
RS 75 W Ex  
AISI316/PRIMED



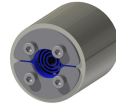
RS 125 W Ex AISI316  
WOC/AISI316



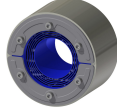
RS 43 W Ex  
AISI316/PRIMED



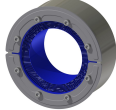
RS 100 W Ex AISI316  
WOC/PRIMED



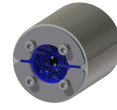
RS 25 W Ex  
AISI316/AISI316



RS 100 W Ex AISI316  
WOC/AISI316



RS 150 W Ex AISI316  
WOC/PRIMED



RS 50 W Ex  
AISI316/PRIMED

Title	Konfiguration	Öffnungsmaße Ø	Gewicht	Art. Nr.
RS 100 W Ex AISI316/AISI316			2.3	EXRSW1000002121
RS 25 W Ex AISI316/PRIMED	1x (3.6-12.0)	25 - 26	0.17	EXRSW0250002112
RS 125 W Ex AISI316 WOC/PRIMED	1x (66.0-98.0)	125 - 127	2.9	EXRSW0125102112
RS 150 W Ex AISI316 WOC/AISI316	1x (93.0-119.0)	150 - 152	3.2	EXRSW0150102121
RS 100 W Ex AISI316/PRIMED			2.2	EXRSW1000002112
RS 75 W Ex AISI316/AISI316	1x (24.0-54.0)	75 - 77	1.5	EXRSW0750102121
RS 50 W Ex AISI316/AISI316	1x (8.0-30.0)	50 - 52	0.9	EXRSW0500002121
RS 43 W Ex AISI316/AISI316	1x (4.0-23.0)	43 - 45	0.6	EXRSW0430102121
RS 75 W Ex AISI316/PRIMED	1x (24.0-54.0)	75 - 77	1.5	EXRSW0750002112
RS 125 W Ex AISI316 WOC/AISI316	1x (66.0-98.0)	125 - 127	3.2	EXRSW0125102121
RS 43 W Ex AISI316/PRIMED	1x (4.0-23.0)	43 - 45	0.6	EXRSW0430002112
RS 125 W Ex AISI316/PRIMED			3.2	EXRSW1250002112
RS 125 W Ex AISI316/AISI316			3.2	EXRSW1250002121
RS 100 W Ex AISI316 WOC/PRIMED	1x (48.0-70.0)	100 - 102	2	EXRSW0100102112
RS 25 W Ex AISI316/AISI316	1x (3.6-12.0)	25 - 26	0.24	EXRSW0250002121
RS 100 W Ex AISI316 WOC/AISI316	1x (48.0-70.0)	100 - 102	2.3	EXRSW0100102121
RS 150 W Ex AISI316 WOC/PRIMED	1x (93.0-119.0)	150 - 152	3.2	EXRSW0150102112
RS 50 W Ex AISI316/PRIMED	1x (8.0-30.0)	50 - 52	0.9	EXRSW0500002112

The product information provided by Roxtec does not release the purchaser of the Roxtec system, or part thereof, from the obligation to independently determine the suitability of the products for the intended process, installation and/or use. Roxtec gives no guarantee for the Roxtec system or any part thereof and assumes no liability for any loss or damage whatsoever, whether direct, indirect, consequential, loss of profit or otherwise, occurred or caused by the Roxtec systems or installations containing components not manufactured by an authorized manufacturer and/or occurred or caused by the use of the Roxtec system in a manner or for an application other than for which the Roxtec system was designed or intended. Roxtec expressly excludes any implied warranties of merchantability and fitness for a particular purpose and all other express or implied representations and warranties provided by statute or common law. User determines suitability of the Roxtec system for intended use and assumes all risk and liability in connection therewith. In no event shall Roxtec be liable for indirect, consequential, punitive, special, exemplary or incidental damages or losses. The Roxtec products are offered and sold in accordance with the conditions of the Roxtec General Terms of Sales. The latest version of the Roxtec General Terms of Sales can be downloaded from <https://www.roxtec.com/en/about-us/about-roxtec/general-terms-of-sales/> We reserve the right to make changes to the product and technical information without further notice. Any errors in print or entry are no claims for indemnity. The content of this publication is the property of Roxtec International AB and is protected by copyright. This document was generated on: 2024-04-23